



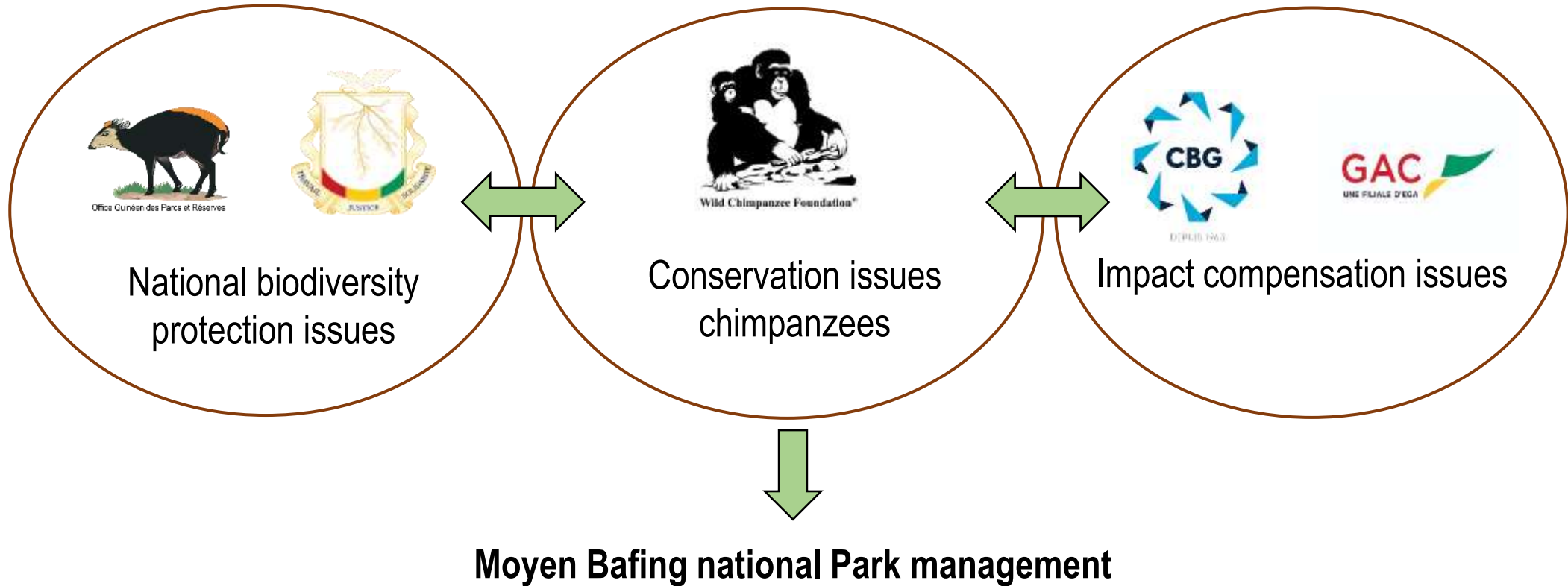
Creation context, biological and socio-économique data collecting system in Moyen-Bafing National Park, Guinea.

Pacifique WIMANA KIZILA, WCF Guinea Country Director



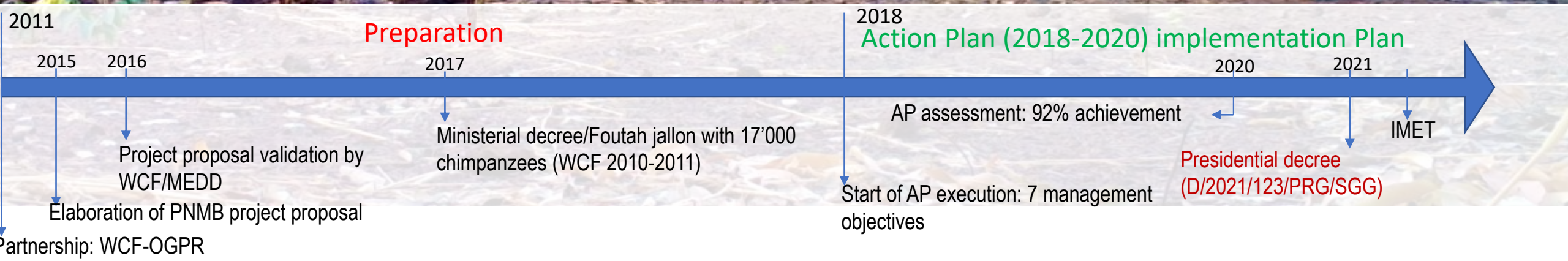
1. Moyen Bafing national Park: Creating process context

A first National Park in West Africa, which the creation process was financed by private company based on the ecological compensation principle.



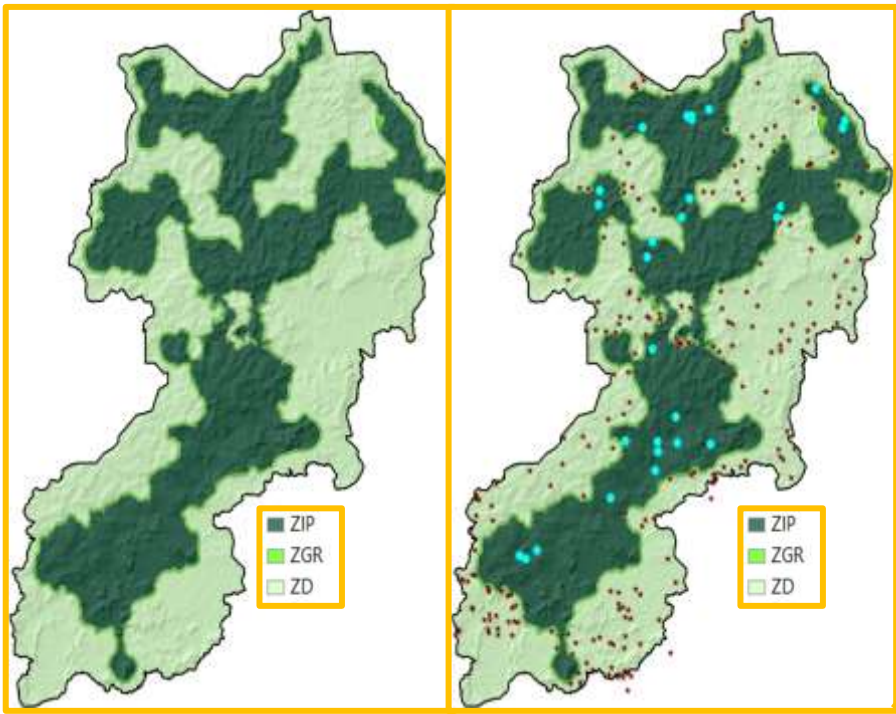
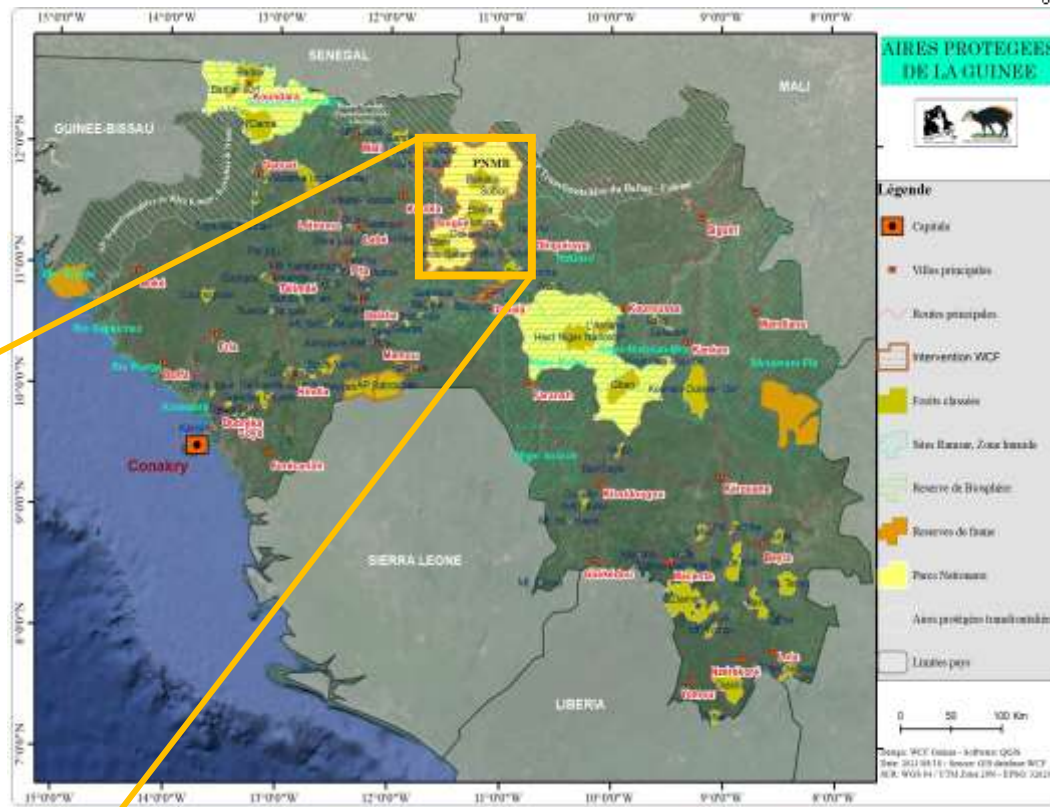


Moyen Bafing national Park: Creating process context





2. Moyen Bafing National Park: Location

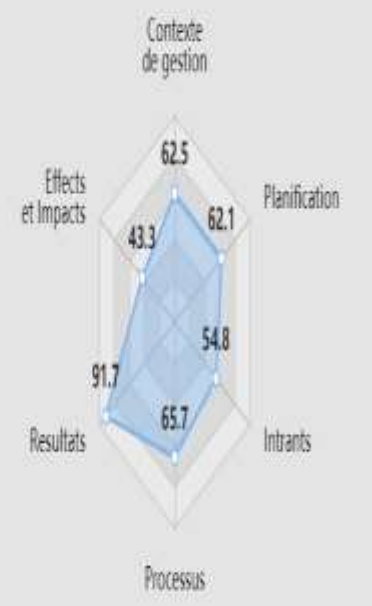
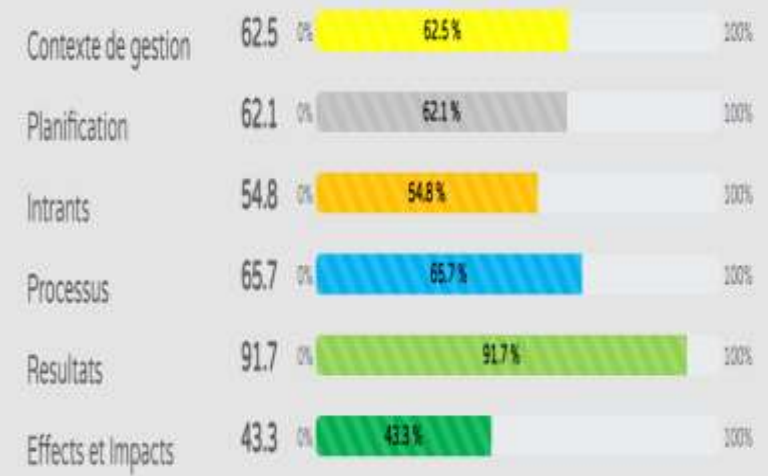


- 6767 Km²
- 290 villages in 15 municipalities including 28 enclaves
- 3 management areas: ZIP (dark green), ZGR (light green), ZD (light green more)



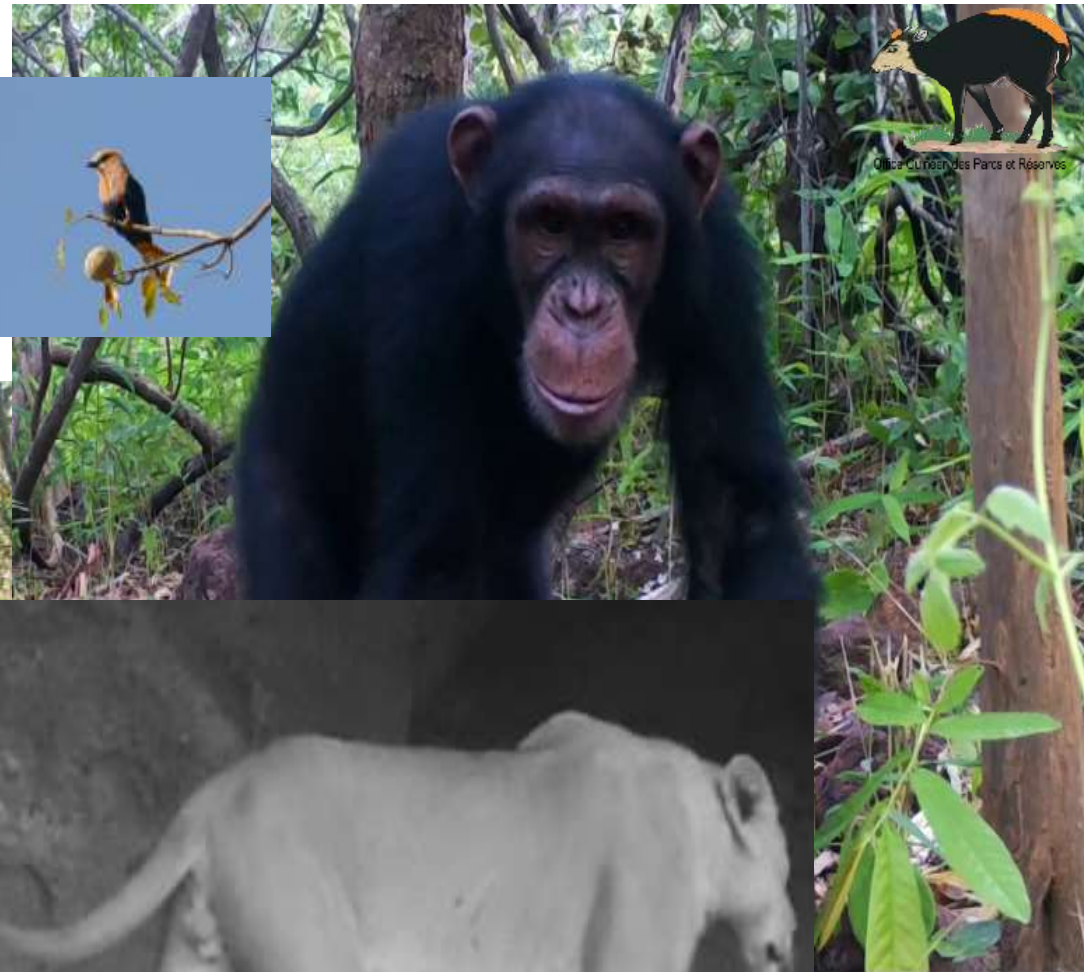


Évaluation des éléments du cycle de gestion de l'aire protégée



Contexte de gestion	Planification	Intrants	Processus	Resultats	Effects et Impacts	IMET index
62.5	62.1	54.8	65.7	91.67	43.3	63.35

The Integrated Measurement Effectiveness Tool (IMET) assessment made it possible to match the actions to be carried out between the coordination teams and the field teams Global IMET score: 63,35



3. Biodiversity results

- 281 plant species
- 51 fish species;
- 47 mammals species;
- 136 bird species

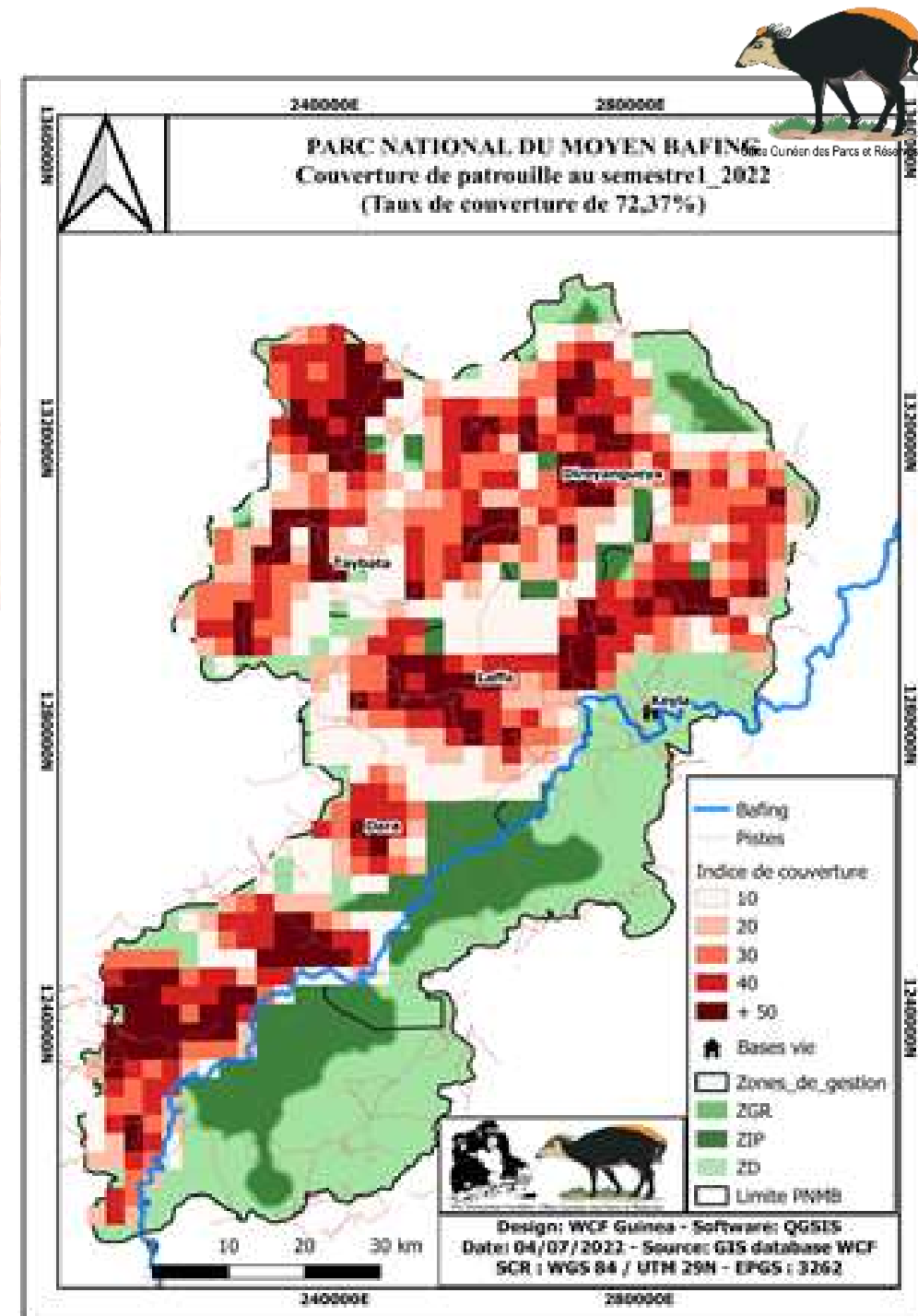




Patrols have reduced illegal activities in the PNMB area

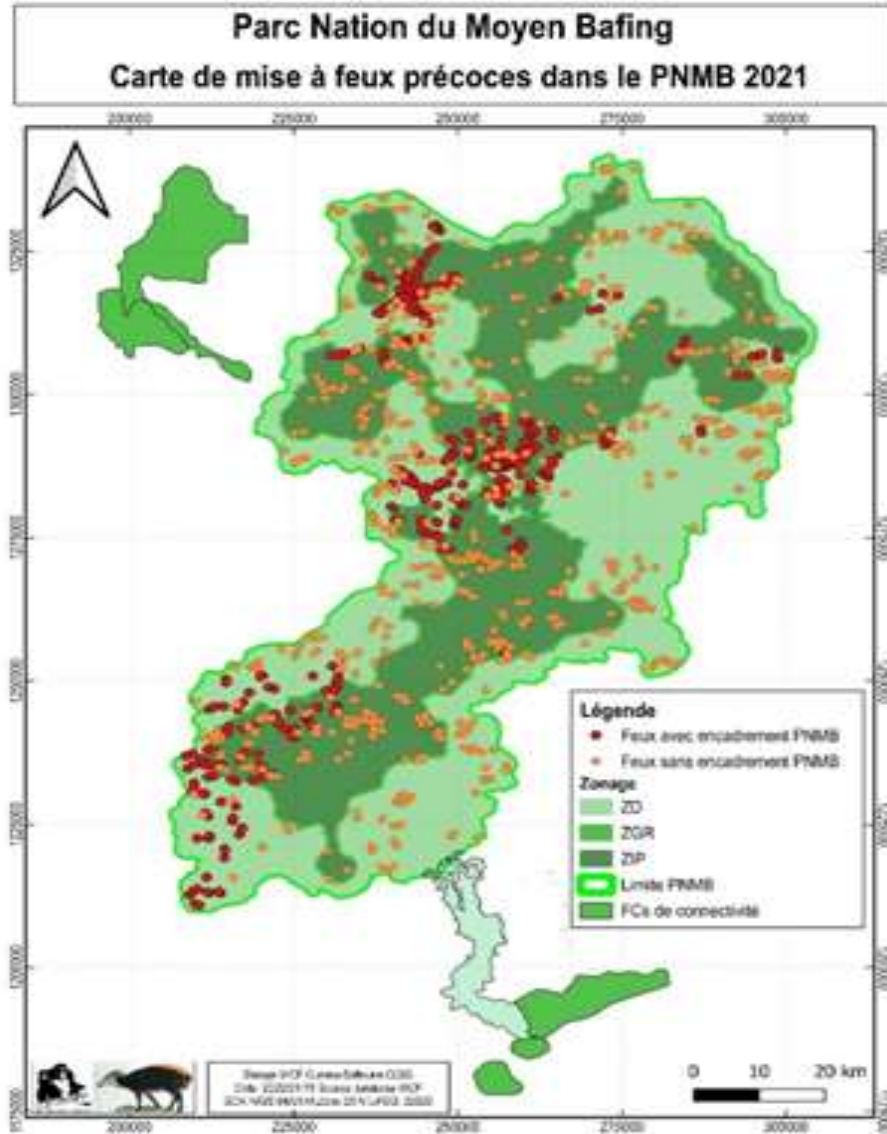


	Areas patrolled	Total Patrols	Total Days	Total Nights	Distance (km)	Total Men/Day	Total Hours
MBNP	Dara	14	115	104	1167.1	552	635.7
	Fello Koundoua	7	88	78	938.7	415	419.0
	Kansangui	10	111	92	1125.1	539	462.6
	Kela	9	109	100	995.9	548	761.3
	Laffa boubhé	8	69	57	1396.4	368	1071.8
	Ndire Yangueya	10	116	99	1740.4	549	966.6
Total MBNP		58	608	530	7,363.6	2,971	4,317.0





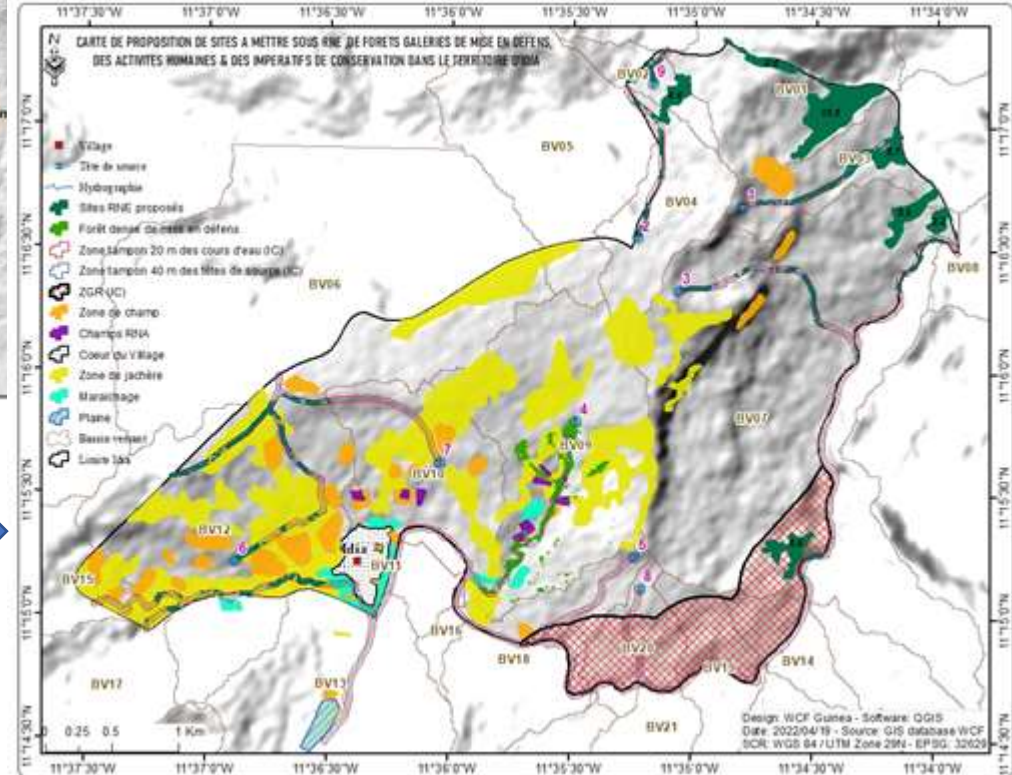
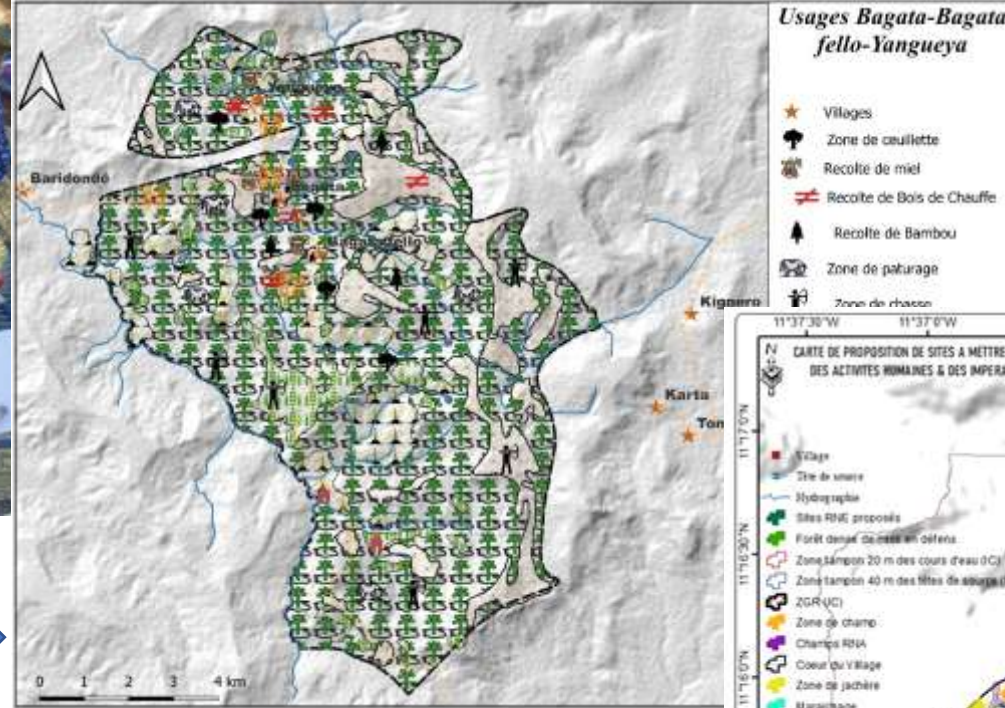
Fire management



		Surface of MBNP burned (km ²)			Surface of MBNP (%)	
		Early fires	Late fires	Total	Burned	Protected
MBNP Zoning Plan	ZIP	279.51	574.98	854.49	30.8	69.2
	ZGR	41.65	86.13	127.78	32.4	67.6
	ZD	364.14	762.36	1126.5	31.3	68.7
MBNP's forests	Gallery forests	3.99	262.97	266.96	19.5	80.5
	Open forests	14.62	833.16	847.78	26.3	73.7
HCVs	Gallery forests	0.94	66.5	67.44	18.6	81.4
	Open forests	3.74	217.0	220.74	25.2	74.8

Location of the 429 prescribed burns (*early fire*) in red which were implemented from December 2021 to February 2022; (Right) Location of the 553.72 kilometers of firebreaks created to protect forested areas and Natural Ecological Regeneration (NER) sites

4. Socio-economic results

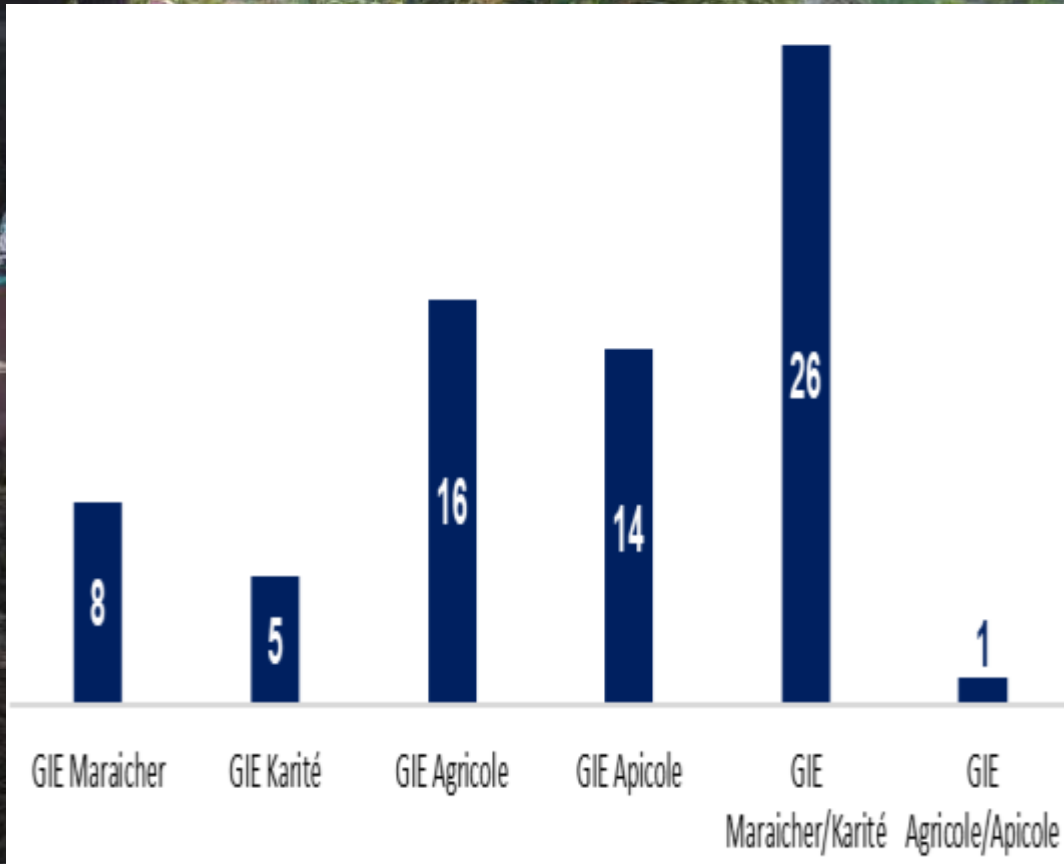


Participatory mapping exercise with women in the village of Kindo

To date, seven 12 DSEL and 11 PDL have been established out of the 15 planned for each (Table 21).



The management of the MBNP has contributed to the communities socioeconomic development within the Park



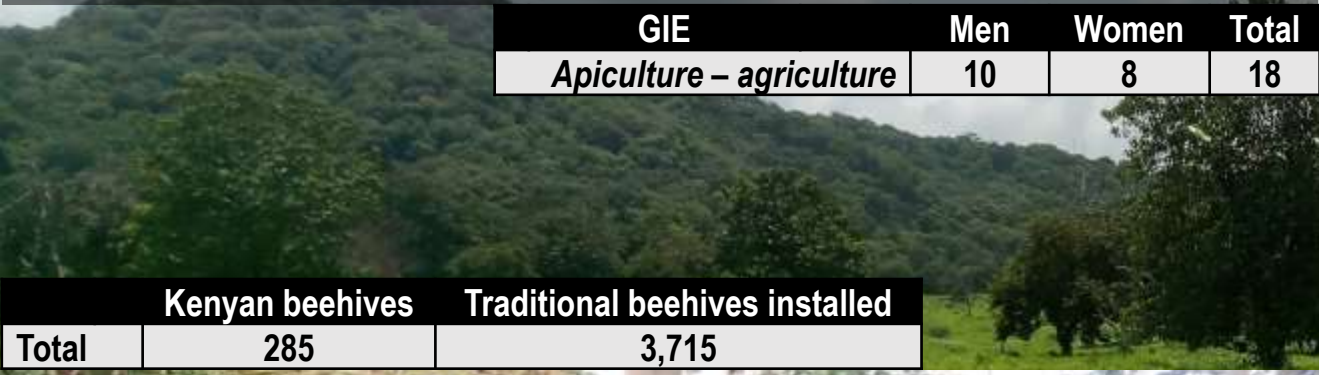
Community economic interest groups:

To date, 70 community economic interest groups have been created, in which 2,130 community members including 1,511 women from 41 villages actively participate.



The FMNR has reduced the wandering of farmers in search of the apt agriculture soils every 2-3 years. At the same time, beekeeping has increased household incomes.

GIE	Men	Women	Total
<i>Apiculture – agriculture</i>	10	8	18



	Kenyan beehives	Traditional beehives installed
Total	285	3,715



A total of 117 fields (64 old / 53 new) went under evaluation during the first quarter of 2022 following these criteria:

- Commitment of the farmer;
- Depth of soil;
- Level of the slope;
- Age of the field;
- Availability of tree species;
- Must be outside the strict zone reserve (ZIP) and high conservation value areas (HCV).



Transhumance management is central issue to reducing inter-community conflicts

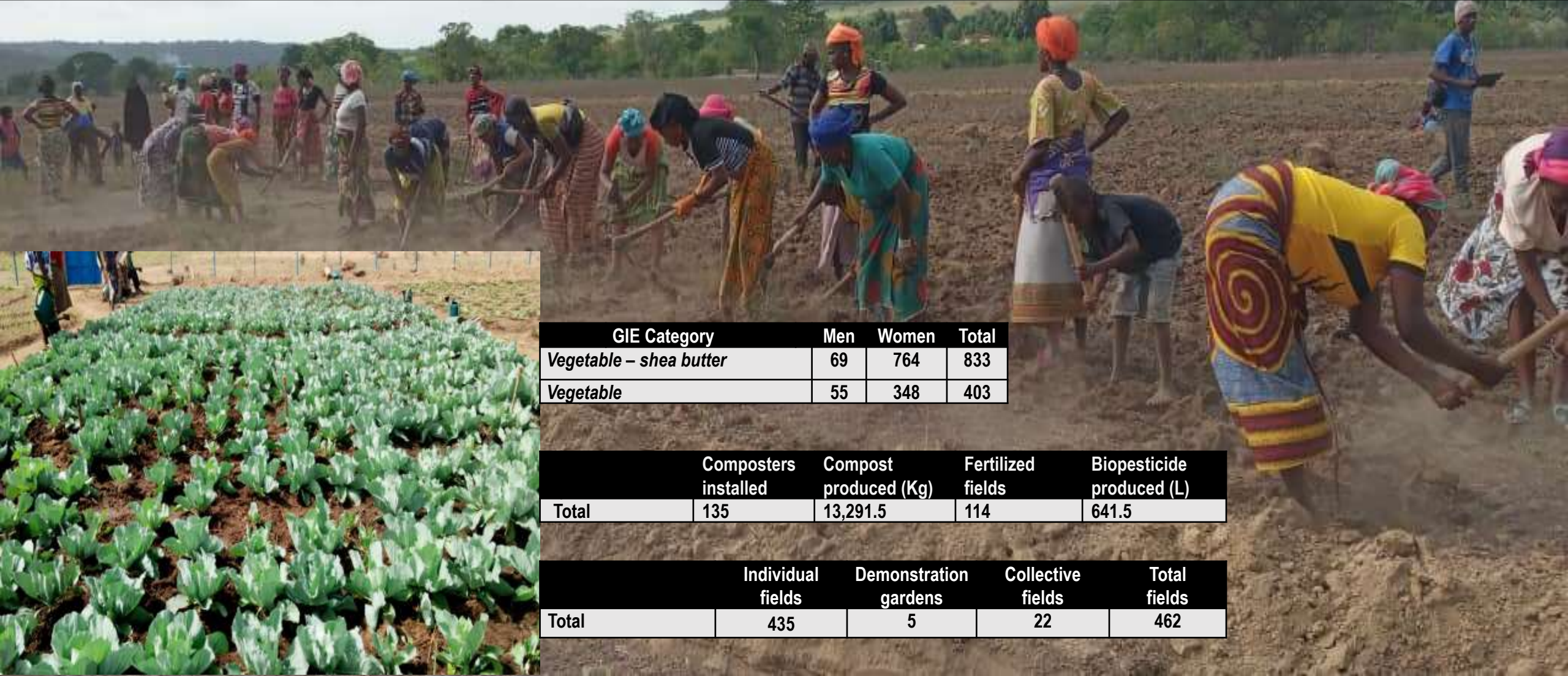


A pastoralism and livestock program was created to respond to the environmental degradation caused by over-grazing cattle and human-wildlife conflicts. Today 5 pens were erected with a community participation. Pastoralists are trained in the manufacture of nutritional blocks to reduce the wandering of livestock source of conflicts.





The collective agriculture practice has allowed to talk with communities on climate change issues



GIE Category	Men	Women	Total
<i>Vegetable – shea butter</i>	69	764	833
<i>Vegetable</i>	55	348	403

	Composters installed	Compost produced (Kg)	Fertilized fields	Biopesticide produced (L)
Total	135	13,291.5	114	641.5

	Individual fields	Demonstration gardens	Collective fields	Total fields
Total	435	5	22	462



N°	Schools	Prefecture	Total boys	Total girls	Total
1	Gagnakaly	Dinguiraye	91	38	129
2	Kela		35	25	60
3	Kalinko		93	42	135
4	Missira Djallonké		22	40	62
5	Beleya		67	35	102
	Total		308	180	488
6	Laffa-Boubhé	Tougué	49	29	78
7	Kouratongo		52	41	93
8	Kounet		44	37	81
9	Dara		42	28	70
10	Fello-Kollet		35	55	90
	Total		222	190	412
		Grand total	530	370	900



5. Key challenges

❖ How to updated the lack data ?



❖ How to collect missing data to guide management decisions?



**200 people working in the
Moyen Bafing project**

Programs:

1. **Natural habitat monitoring;**
2. **Fauna monitoring;**
3. **Fire management;**
4. **Patrols/Surveillance;**
5. **Local governance;**
6. **Communication;**
7. **PGTV;**
8. **Agricultural production;**
9. **value chains development;**
10. **pastoralism and livestock.**



Good governance has made it possible to organize work at the strategic and operational level

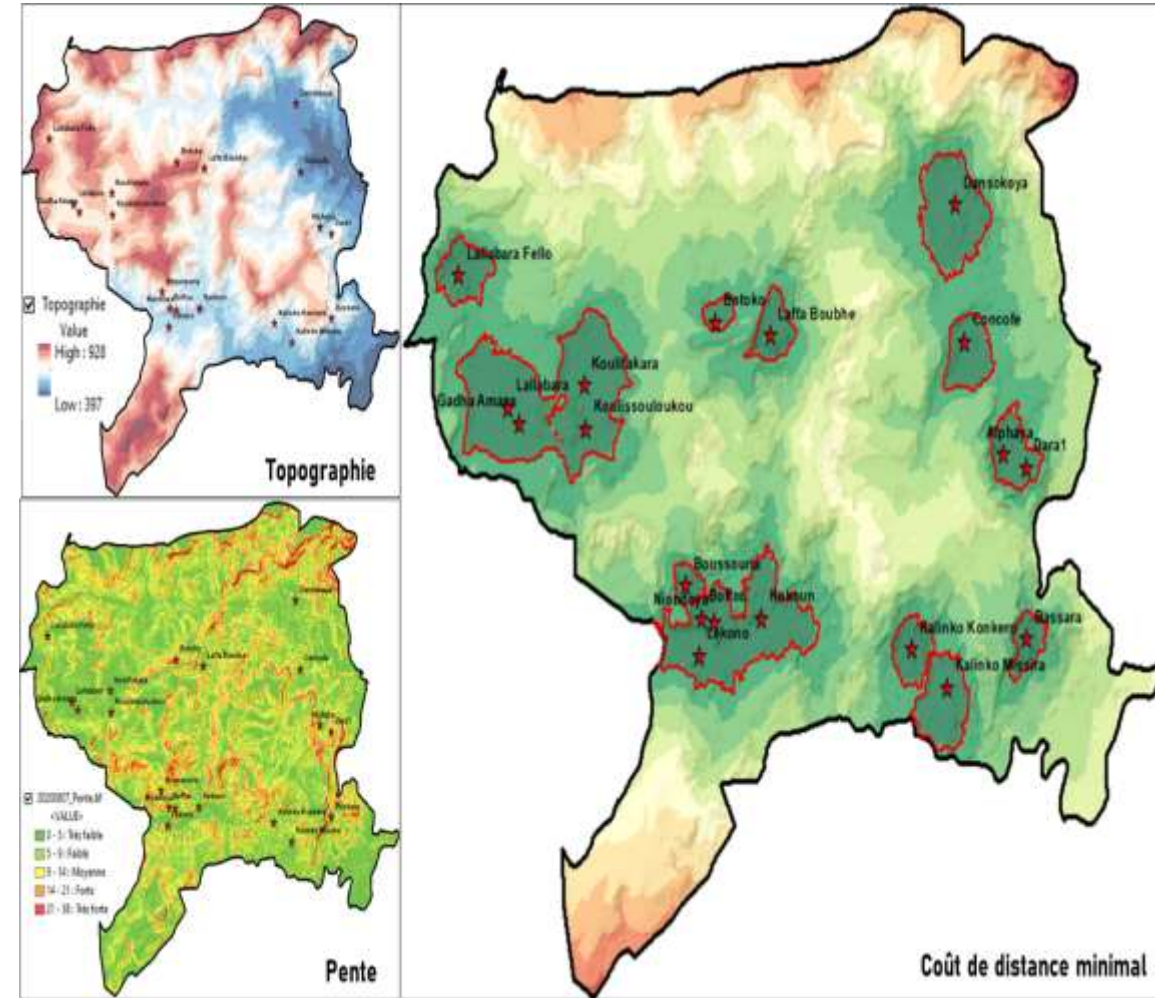
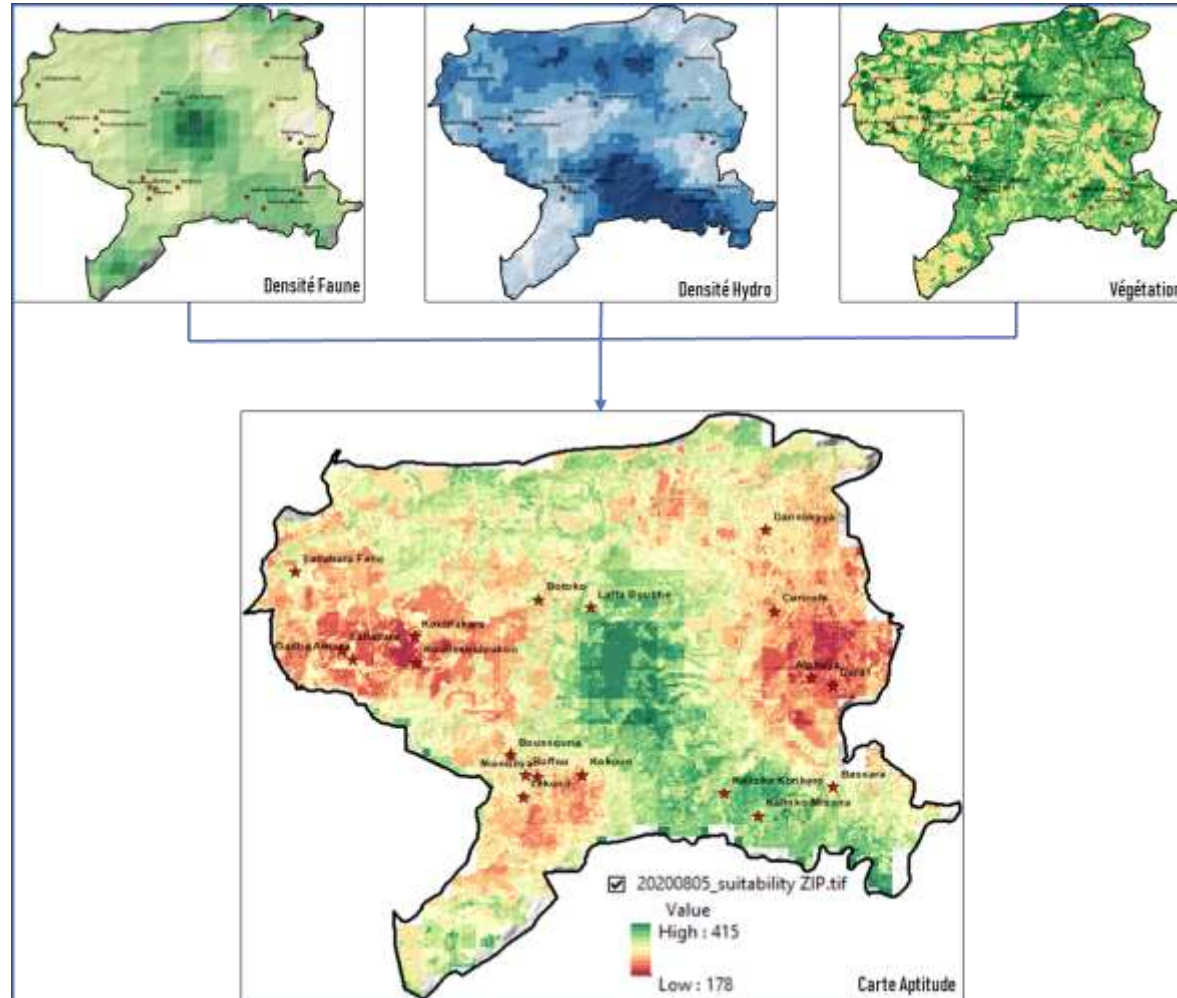


Environmental and socioeconomic data collect



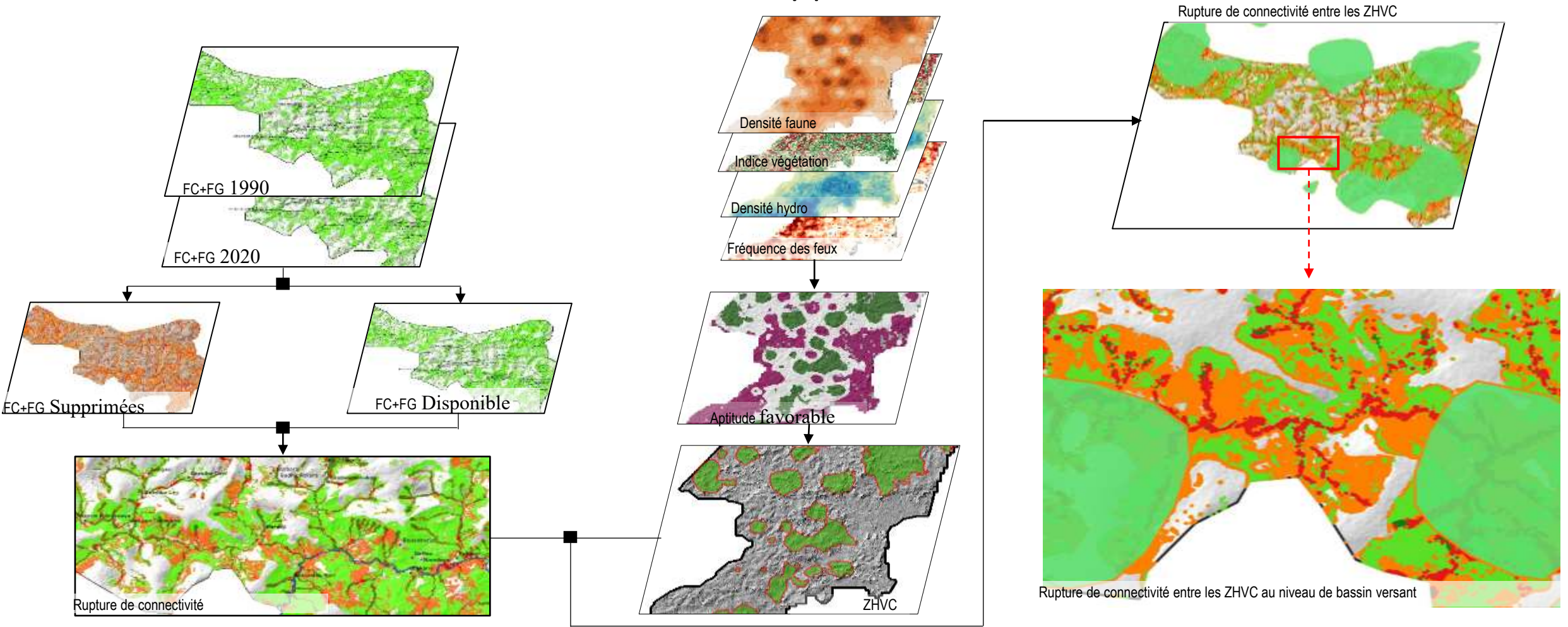
Zoning: Hot spot of biodiversity vs sustainable human activities

Land mapping and minimum distance cost for agriculture activities





The forest degradation analysis have made it possible to quantify the deforestation extent and the forest connectivity potentials





Wild Chimpanzee Foundation

Office Cynéer des Parcs et Réserves



OUR THANKS TO THE PUBLIC AND PRIVATE PARTNERS

©Wild Chimpanzee Foundation

